

Max-Grip® Fasteners

Max-Grip® 型单面铆钉采用特殊结构设计,利用套环的挤压塑性变形,在铆钉头部一侧形成盲铆头,另一侧发生塑形变形后与铆钉形成永久性连接。与其他单面连接技术相比,该类型铆钉具有连接强度高、可靠性好、抗震性能优异等优点,安装简单方便、无需后期维护,防腐蚀性能好等特点。



In addition to consistent clamp force, shear and tensile strength, the Max-Grip® fasteners provide a unique locking-groove design, which ensure the application of different demands---reduce the rework and warranty claims.

- 该类型铆钉主要是用于单面连接 (板与箱型结构间连接等)

Application on one-surface connection (sheet and other structures eg, box structure)

- 铆钉和套环经过特殊表面处理,具有优良的防腐性能,可用于不同材料间紧固连接 (铝和钢,铝和铝、金属和非金属等)。

After special surface treatment, Max-Grip® Fasteners are highly anti-corrosion and qualified to fastening connection of different materials (eg. Aluminium and steel, Non-metallic and metallic).

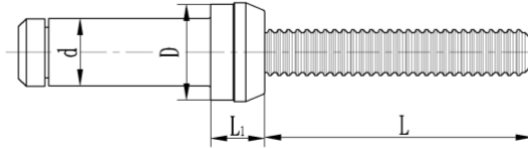
Max-Grip® has been designed for applications in ship building, railway, automotive assembly including car seats, other ground transportation, mining equipment and construction.

直径规格 Sizes : 5mm、6mm、8mm、10mm、12mm、16mm (3/16" - 5/8")

材 料 Material : 钢 Steel

Lokgator Industrial Fasteners

铆钉基本尺寸 Dimensions



直径规格 Dia	d		D		L1		L
	min	max	min	max	min	max	
5	4.98	5.23	7.01	7.26	3.86	4.27	19.94
6	6.65	6.99	9.35	9.65	5.21	5.72	25.84
8	8.43	8.79	11.89	12.14	6.76	7.06	32.64
10	9.98	10.44	14.05	14.30	8.00	8.31	35.74
12	13.44	13.82	18.90	19.15	10.54	11.13	38.86
16	16.81	17.40	23.65	23.9	12.88	13.84	43.43

单面铆钉力学性能 Performance

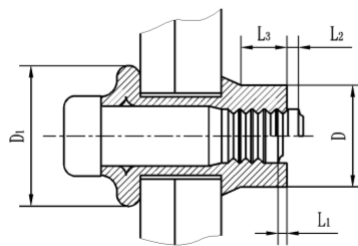
直径规格 Dia	5	6	8	10	12	16
剪切力/kN Shear	≥12.4	≥22.7	≥35.8	≥49.3	≥89.6	≥126.7
拉脱力/kN Tensile	≥7.9	≥14.4	≥22.9	≥32	≥57.5	≥90.6

安装孔 Hole Sizes

直径规格 Dia	5	6	8	10	12	16
铆钉孔直径 Hole dia	5.3-5.6	7-7.4	8.8-9.3	10.5-11.1	13.9-14.8	17.5-18.5

铆接厚度及相关尺寸 (Grip Range)

铆接 厚度 代号 Type No.s	铆接厚度 Grip range (mm)											
	φ5		φ6		φ8		φ10		φ12		φ16	
	min	max	min	max	min	max	min	max	min	max	min	max
3	2.4	4.0	2.4	4.0	-	-	-	-	-	-	-	-
4	4.0	5.6	4.0	5.6	-	-	-	-	-	-	-	-
6	5.6	7.1	5.6	7.1	4.8	7.9	4.8	7.9	6.4	9.5	6.4	12.7
8	7.1	8.7	7.1	8.7	-	-	-	-	-	-	-	-
9	8.7	10.3	8.7	10.3	7.9	11.1	7.9	11.1	9.5	12.7	-	-
11	10.3	11.9	10.3	11.9	-	-	-	-	-	-	-	-
12	11.9	13.5	11.9	13.5	11.1	14.3	11.1	14.3	12.7	15.9	12.7	19.1
14	13.5	15.1	13.5	15.1	-	-	-	-	-	-	-	-
16	15.1	16.7	15.1	16.7	14.3	17.5	14.3	17.5	15.9	19.1	-	-
17	16.7	18.3	16.7	18.3	-	-	-	-	-	-	-	-
19	18.3	19.8	18.3	19.8	17.5	20.6	17.5	20.6	19.1	22.2	19.1	25.4
22	-	-	-	-	20.6	23.8	20.6	23.8	22.2	25.4	-	-
25	-	-	-	-	23.8	27.0	23.8	27.0	25.4	28.6	25.4	31.8
28	-	-	-	-	-	-	27.0	30.2	28.6	31.8	-	-
31	-	-	-	-	-	-	30.2	33.3	31.8	35	31.8	38.1

Max-Grip® 型单面铆钉铆接后的型式尺寸 After Installation (mm)


直径规格 Dia	L1 max	L2 max	L3 min	D max	D1 Ref
5	0.8	2.4	2.8	6.6	7.7
6		2.4	4.0	8.8	10.3
8	1.2	4.4	4.8	11.0	13.1
10		4.4	5.2	12.9	15.4
12	1.6	4.4	7.5	17.4	21.4
16	2.0	7.9	10.3	22.1	26.4

安装示意图 Installation Sequence

